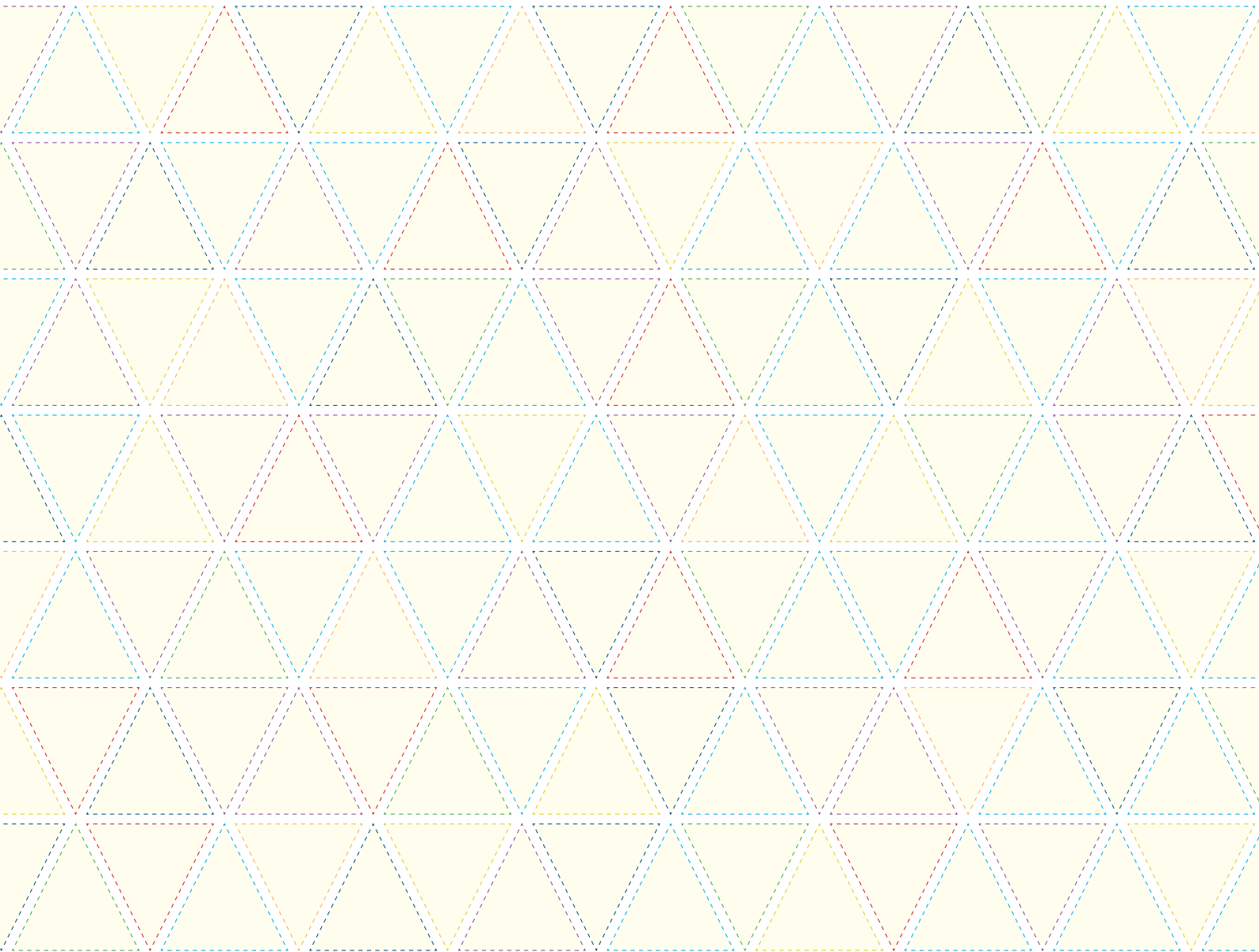


Seoul School of Integrated Sciences & Technologies (aSSIST)

67-7 Daehyun-Dong, Seodaemun-Gu, Seoul 120-808, Korea T. 82-70-7012-2700 F. 82-70-7016-2700 H. www.assist.ac.kr

The First Mover, **aSSIST**



aSSIST, Korea's first Graduate School of Management focusing on Master's and Ph.D. programs

aSSIST is Korea's first Graduate School of Management focusing on Master's and Ph.D. programs. The School has been leading business education since 1995, when it first started as an education program in IPS, the Institute for Industrial Policy Studies. aSSIST is now 'The First Mover' in the nation, leading the new future of business schools.

Contents

President's Message	03
Introduction	04
aSSIST Features	06
aSSIST Network	08
aSSIST Education Program Table	10
aSSIST Student Profile	11
aSSIST MBA Program	12
aSSIST Ph.D. / Short-Term Course	14
aSSIST Customized Program	16
aSSIST CEO Program	18
Recommendations	20
Contact us	22



Message From the President

The First Mover, Seoul School of Integrated Sciences & Technologies (aSSIST), is Korea's first professional business graduate school, designed for Master's and Ph.D programs, that was established in 2003.

Since our foundation, our goal has been to cultivate professional business talents who not only are experts in their respective fields, but also display creative business abilities through their firm business ethics, environmental awareness, and a keen insight for the future, based on our distinctive educational philosophy: "continuous management-4T: eThics, Teamwork, Technology, sTorytelling."

In the rapidly changing business environment, the Seoul School of Integrated Science & Technologies (aSSIST) will act as a first mover, offering a new management paradigm that will aSSIST every student who wishes to become a professional businessman that plays a leading role in creating a sustainable future.

Lee, Nam Sik 

President of Seoul School of Integrated Sciences & Technologies

Introduction to aSSIST

▣ Year 2011

- ⊙ Appointment of the 4th President, Lee, Nam Sik
- ⊙ The 6th Jeju Forum (Comprehensive International Forum), co-hosted with Jeju Peace Institute

▣ Year 2010

- ⊙ Exchange program agreement (Double Degree Agreement) with the State University of New York at Stony Brook, USA
- ⊙ Exchange program agreement (Double Degree Agreement) with Finland Aalto University (Former Helsinki School of Economics)
- ⊙ Establishment of 'aSSIST CEO FORUM', nation's first CEO sustainability management education community
- ⊙ Completion of 10th '4T CEO Sustainability Management' course
- ⊙ Appointment of Dr. Hong, Hwa Soon as acting President
- ⊙ Opening of '4T CEO Green Growth' course and 'Traditional Arts & Culture CEO' course
- ⊙ Opening of '4T Next Generation Business Leader' course
- ⊙ Awarded the '2010 Korean HRD Awards Best Education' by the Korean Human Resource Development Association
- ⊙ Recognized as 'Green Education Institution' by Presidential Committee on Green Growth

▣ Year 2009

- ⊙ Selected as a "Global Top 100" graduate school in social responsibility business education and ethics by The Aspen Institute
- ⊙ Opening of 'Industrial Security MBA' Course
- ⊙ Opening of 4 MBA courses in 'Graduate School of Leisure Business'
- ⊙ Signing of Dual Degree Agreement with George Mason University in the U.S.

▣ Year 2008

- ⊙ Signed MOU with National Industrial Security Center of National Intelligence Service
- ⊙ Opening of 'Climate Change Leadership' course
- ⊙ Agreed to establish aSSIST Graduate School of Leisure Business with Chuncheon city
- ⊙ Opening of 'Certified Professional in Supply Management' course (previous C.P.M course)

▣ Year 2007 ~ 2003

- ⊙ Yoon, Eun Ki is appointed as the 2nd president
- ⊙ Opening of Ph.D. course in business
- ⊙ Opening of '4T CEO Sustainability Management' course
- ⊙ Opening of 'Financial Engineering MBA' course and 'Global Leadership MBA' course
- ⊙ Transfer of IPS 'Industrial Policy Studies' education department to 'aSSIST'
- ⊙ David N. Smith is appointed as 1st president

[aSSIST Educational Philosophy]

Sustainability Management-4T represents aSSIST’s educational principle aiming to cultivate holistic experts in sustainability management



[aSSIST Awards]

Selected as “2009-2010 Global Top 100” by The Aspen Institute



- Recognized for the school’s dedicated education of ethics, aSSIST was selected by The Aspen Institute as a ‘2009-2010 Global Top 100’ school. aSSIST is the first and only school to be acknowledged by The Aspen Institute.
- Other renowned business schools acknowledged by The Aspen Institute include: Schulich School of Business of York University in Canada, Stephen M. Ross School of Business of the University of Michigan, Yale School of Management, UC Berkeley, London Business School, MIT, and Stanford Graduate School of Business.

Appointed as a ‘Green Education Institution’ by the Presidential Committee on Green Growth



- Based on aSSIST’s distinctive ethical ‘Sustainability Management – 4T’, all curricula adopt issues and subjects related to environment management. The school was also recognized for its ‘Declaration of Low Carbon Management’ and CEO courses that began in 2008, emphasizing the importance of environment management and spreading the idea to all opinion leaders.

Awarded the ‘2010 Korean HRD Awards Best Education’ by the Korean Human Resource Development Association



- By cultivating Master’s and Doctoral students with expertise and global competency through leading education programs in ethics, sustainability management, environment, leisure, and industrial security, the school has been acknowledged for its excellence.

aSSIST Features

▣ The First Mover in Business Education

All programs, academic affairs, long-term plans and the implementation of aSSIST center around its distinctive ethical 'Sustainability Management - 4T'. And with this credo, the school is 'The First Mover' in the field. It continues to lead the 21st century business paradigm and it achieved several titles such as "Korea's first Master's and Doctorate Graduate School of Business," "Korea's first ethics management education institute to be internationally acknowledged," and "Korea's first specialized education program."

▣ Course Evaluation & Feedback System

aSSIST maintains its high quality courses by conducting online and offline course evaluations. The results of the evaluations affect next semester's course openings and professor allocations. All of the students who participated in the course evaluate the course on the criteria of 'course satisfaction,' 'faculty members,' 'course materials,' and several others.



▣ Cultivating Business Professionals in 'Ethical & Sustainability Management'

aSSIST concentrates on cultivating business professionals who will commit themselves in applying CSR to a business based on strong ethical consciousness. The school has also joined UN Global Compact 'PRME', introduced a 5-minute special lecture series on ethics and ethical management courses, and published sustainability management reports and webzines.

▣ Global Business Education from Leading Business Schools around the Globe

aSSIST offers global business education by running a dual degree program, and co-developing educational and exchange student programs with leading business school's around the globe. The school also invites distinguished scholars, and hosts joint seminars to share up-to-date and systematic business knowledge.

▣ A Strong Network of 1,000 CEOs

Almost 1,000 CEOs of the nation's top conglomerates participate in all aSSIST programs, such as 'CEO adjunct professor,' 'CEO seminar,' 'aSSIST CEO Forum,' and 'CEO Breakfast Seminar.' These programs allow the participants to learn about real business issues and cases, as well as establish a strong infrastructure to strengthen the ties between industry and academia.

▣ Social Responsibility Scholarship

aSSIST has been aiming to support its alumni, who have advanced into several areas of society, to achieve sustainability management with its Social Responsibility Scholarship since 2007. This scholarship sponsors students who will, in the future, advance into the real business world and contribute to their country and society by achieving sustainability management.



aSSIST Network

[Global Business Education from Leading Business Schools around the Globe]



'Triple Crown' accreditation, Aalto University School of Economics (Helsinki School of Economics)

Accredited by 'AACSB', 'AMBA', 'EQUIS'



2007
accredited by AACSB



2004
accredited by AMBA



1998
accredited by EQUIS

※ There are only 35 universities with Triple Crown accreditation in the world

▣ **MOU(Memorandum of Understanding) with prominent domestic organizations to cultivate business leaders for sustainability management**

2008. 11.28	MOU with National Industrial Security Center of National Intelligence Service -----	
2009.05.25	MOU with Seoul National University Hospital Gangnam Center -----	
2009.06.16	MOU with Philips Electronics to develop local community -----	
2009.08.25	MOU with Panel Insight on research and academic exchange -----	
2009. 12.07	MOU with Kweather on environment management and CSR -----	
2010. 01.21	MOU with The National Theater of Korea to develop arts and culture -----	
2010.01.26	MOU with Korean Broadcasting Agency Art -----	
2010.02.10	MOU with Chungnam University Department of Scientific Criminal Investigation on academic exchange -----	
2010.02.22	MOU with AVIS on sustainable development and CSR -----	
2010.05.10	MOU with Korea Foundation for Women to cultivate female business leaders -----	
2010. 07.14	MOU with The Korea Chamber of Commerce & Industry -----	
2010. 07.20	MOU with 2010 Chuncheon World Leisure Congress and Leisure Games -----	
2010. 09.27	MOU with Graduate University of the Chinese Academy of Sciences -----	
2010. 10.08	MOU with Jeju Peace Institute -----	
2011. 02. 26	Signed an MOU with Leisure Industry Daemyung -----	
2011. 03. 14	Signed an MOU with China Europe International Business School -----	
2011. 04. 06	Signed an MOU with Sejoong Namo Tour Co., Ltd. -----	
2011. 08. 24	Signed an MOU with Korea University Graduate School of Information Security -----	



aSSIST Education Program Table

Classification	Course name	Qualifications	Beginning of Lectures	Term	Dual Degree	
Degree course	MBA	Global Leadership	Bachelor's degree from a 4-year college (Job-experience, Fluency in English preferred)	Once a year - every September	18 ~ 24 Months	Aalto (Fomer HSE) /GMU
		Financial Engineering		Once a year - every March	18 Months	*International Residency Programs are administered
		Industrial Security		Once a year - every March	18 ~ 24 Months	GMU
		Graduate School of Leisure Business		Twice a year - every March, September	18 ~ 24 Months	GMU *International Connective Courses are separately administered
		China & Korea MBA		Twice a year - every March, September	24 Months	GMU / GUCAS
		i-MBA		Bachelor's degree from a 4-year college (Detailed requirements are announced annually)	Once a year - every September	18 Months
	Ph.D.	Ph.D. Program(DMA)	Master's degree holder (work experience preferred)	Twice a year - every March, September	36 Months	
Non-degree course	Short-term course	Industrial Security Professional	Personnel from related business and people with interest	Twice a year -	14 Weeks	
		Certified Professional in Supply Management		Twice a year - every April, October	20 Weeks	
	CEO Programs	4T CEO Green Growth Course	Corporate officials, CEOs, high-ranking government officials, business professionals	Twice a year - every April, October	10 Weeks	
		4T Next Generation Business Leader Course	Future management officials, business leaders, business successors	Twice a year - every April, October	12 Weeks	

※ Parts of the information above may be modified

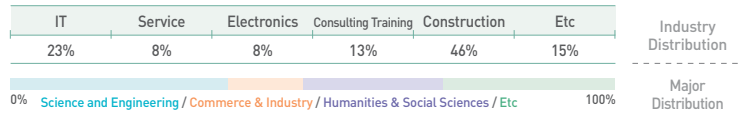
※ The course duration is subject to change depending on each participant's choice (writing a thesis, dual degree, etc.)

※ Refer to the website (www.assist.ac.kr) for further details

aSSIST Student Profile

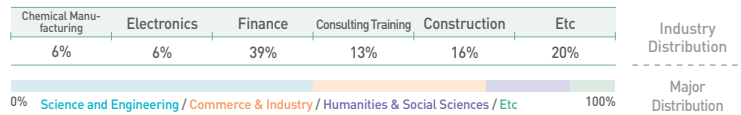
Global Leadership MBA

Average age 34
Average career 8.3 years



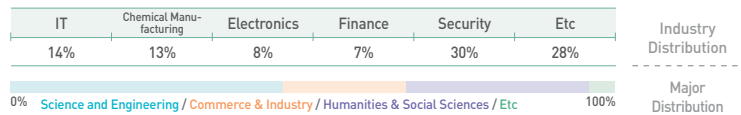
Financial Engineering MBA

Average age 30.8
Average career 3.5 years



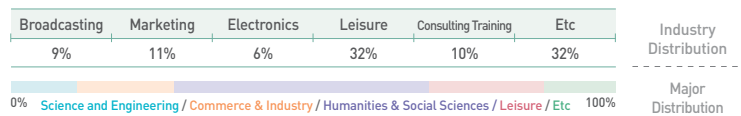
Industrial Security MBA

Average age 38.2
Average career 6.7 years



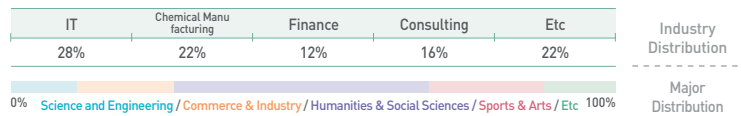
Graduate School of Leisure Business MBA

Average age 34.2
Average career 5.7 years



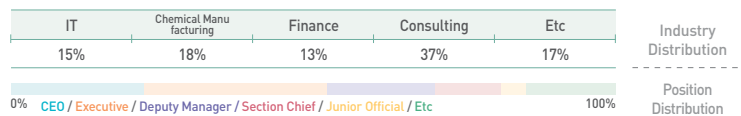
i-MBA

Average age 38.9



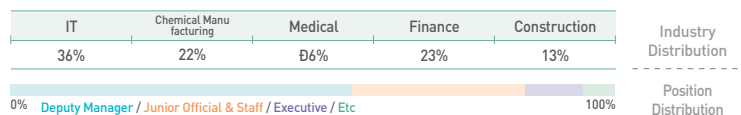
Ph.D.(DMA)

Average age 47.8



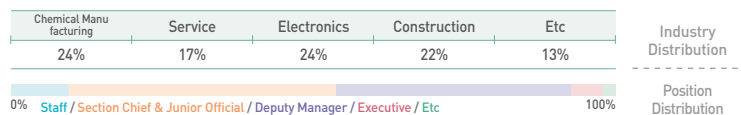
Industrial Security Professional

Security professionals : unrelated industries
6 : 4



Certified Professional in Supply Management(CPSM)

Average age 30.8
Average career 3.5 years



※ The previous information is based on 2010 data, and the average age of applicants and students is decreasing

aSSIST MBA Program

▣ Global Leadership MBA

The MBA program that aims to nurture professional business leaders for sustainability management focusing on the 4T concept of aSSIST

- ◉ Acquisition of a Dual Degree from Aalto University School of Economics (Former Helsinki School of Economics) and George Mason University
- ◉ All students can participate in the exchange student program
- ◉ Organizes social volunteer activities, outdoor activity programs, and internship projects

▣ Financial Engineering MBA

Faculty from George Washington University and other American schools visiting aim to nurture 'Practical Financial Talent'

- ◉ Introducing advanced financial curriculum exercised in Wall Street and the international financial market
- ◉ Visiting faculty members from George Washington University and other American schools renowned for their expertise in finance
- ◉ Visiting worldwide financial institutions for 3-4 weeks in the International Residency Program



▣ Industrial Security MBA

Korea's first ever curriculum combining high-tech industrial security technique and management theory to cultivate management specialists in industrial security

- ⦿ Korea's first curriculum aiming to cultivate experts in industrial security with management knowledge and ethics
- ⦿ Signed MOU with National Industrial Security Center of National Intelligence Service (2008.11.28)
- ⦿ Opportunity to obtain a Dual Degree from George Mason University, one of the best educational institutions for industrial security programs

▣ Graduate School of Leisure Business

Consists of 4 MBA programs of Leisure Management, Halluy Management, Hospitality Management, Leisure Therapy Management

- ⦿ Korea's first MBA program combining leisure culture industry and management theory
- ⦿ Dual Degree programs and many others with prestigious schools from the US and Europe
- ⦿ Manage the 'Leisure Business Project' that carries out business items in the real market
- ⦿ 'Summer School' program including lectures from domestic and foreign CEOs

▣ China & Korea MBA

This program cultivates outstanding individuals in professional management, based on a network of CEOs in the management, economics, and cultural fields of China and Korea.

- ⦿ A team of professors that is made up of CEO professionals who are currently working in the economics and management fields.
- ⦿ All freshmen must choose a double degree, exchange student, and internship program
- ⦿ The curriculum takes on a hands-on approach, and is comprised of management specialized subjects and regular special lectures by CEOs.

▣ i-MBA

MBA program enabling students to obtain a Dual Degree from foreign universities, aiming to cultivate key management officials

- ⦿ Faculty members from renowned domestic and foreign universities selected using strict standards
- ⦿ Maximizing educational efficiency by operating an effective curriculum that enables students to continue their professional careers
- ⦿ Strengthening global competency with Dual Degree programs in conjunction with renowned foreign universities

aSSIST Ph.D. / Short-Term Course



[aSSIST Ph.D. Program]

▣ Ph.D. Program(DMA)

This program operates a 1:1 customized education program of multiple mentor professors to maximize the thesis and the results of the research by adopting the strengths of the American and European methods.

- ⦿ In the first term, the writing up of research proposals and courses on research methods are taken up together.
- ⦿ An outstanding 'Multiple mentor professor program' is operated in order to offer an optimized direction on the thesis subject.
- ⦿ Define systemized theories that reflect practical know-hows by giving priority to experienced applicants with various practical experiences.
- ⦿ Networking and exchanging knowledge in various fields.

[aSSIST Short-Term Course]

▣ Industrial Security Professional(ISP)

14-week course to maximize expertise and knowledge on industrial security

- ⦿ 14-week short-term course concentrating on practical cases in industrial security in connection with the industrial security MBA infrastructure
- ⦿ Instructors from various companies, the National Industrial Security Center, the Public Prosecutor's Office, and the National Police Agency
- ⦿ Certificate of Qualification and diploma on ISP presented

▣ Certified Professional in Supply Management(CPSM)

Focuses on cultivating professionals in supply management by teaching courses on business, leadership, logistics, and strategic purchase

- ⦿ Differentiated educational system and the best faculty members in supply management
- ⦿ Operated by the special director of CPSM
- ⦿ Best supply management network support
- ⦿ Continuous management to support 100% qualification



aSSIST Customized Program _ In-house Program

The aSSIST program for companies is a customized program that is tailored to meet the demands of each company, by considering the curriculum, length of study, method of operation that is needed to train talented professionals that each company desires. All the customized programs are opened after thorough discussions between the human resources management personnel of the company, professors, and committees in order to provide the most effective education and satisfaction. After the customized program is launched, an evaluation of the curriculum is carried out regularly by the participants of the program, and so far, high educational effects and high levels of satisfaction have been observed

▣ Characteristics and Merits of the aSSIST Customized Program

- ⦿ Courses designed to cultivate the right people for the company
- ⦿ Regular systematic course evaluation conducted
- ⦿ Systematic and specialized educational service based on stringent academic programs and management

Incheon International Airport Corporation _ IIAC Future Leader Program



- ⦿ Cultivating business leaders within the organization to take initiative in the world airport industry and become a global leader by learning the future paradigm of sustainability management

LIG Group _ LIG MBA



- ⦿ Nurturing business professionals with innovative business minds and skills, and cultivating strategic decision making skills and competence to be a future leader

STX Business Group _ EMBA-STX



- ⦿ Cultivating creative leaders by helping the core employees of STX acquire global management knowledge, and improving their business minds.

Samchully Co., Ltd. _ Samchully MBA Program



- ⦿ This program is designed for the core employees of Samchully Co. Ltd., and mainly focuses on the fundamental business issues that are directly related to the business outcomes of the company

Korea Electric Power Corporation _ EMBA-UM / IB-MBA



- ⦿ This program is designed for the core employees of KEPCO and its subsidiary companies, and it aims to cultivate a pool of professionals that can carry out overseas businesses and take on the business innovation of public corporations

LG Electronics _ EMBA-DGM



- ⦿ This program selects the core talents within LG Electronics, training them to become the businessmen of the next generation by cultivating and developing their abilities and qualifications in becoming a global leader

Shinhan Bank _ SHEMA



- ◉ SHEMA (SHINHAN Executive Master of Business Administration) program aims to cultivate business leaders to elevate Shinhan Bank to a 'World-class Shinhanbank' in the global financial market

SeAH Group _ SeAH Pre Executive Course



- ◉ Cultivating future business leaders for SeAH Group that will actively adapt to the rapidly changing international business environment. This program features up-to-date business knowledge and theories, case studies, Business Project, and work life balance.

Industrial Bank of Korea _ EMBA-FB for IBK



- ◉ Participants are limited to deputy managers and team leaders, and concentrate on the bank's value management, creative management, confidence management, and partnership management

Kookmin Bank _ EMBA-FB for KB



- ◉ The program concentrates on cultivating skills for the bank's business strategy, Profitable Mass and Universal Banking, strengthening customer-based operation and platform for durable growth, and improving efficiency

KT _ EMBA



- ◉ This program is designed for department heads in each field of KT in order to cultivate competitive future employees with professional abilities.

KTF Strategic Business Leader Program



- ◉ 80-hour training camp program for KTF officials

Kookmin Bank Financial Management Program



- ◉ To elevate its status as a global bank in the international market, the program is trying to cultivate core business skills of bank officials

Hankook Tire



- ◉ Since 1997, middle-management officials are educated on the company's long-term strategic plans and core competency

Hanjin Shipping



- ◉ Program concentrates on cultivating gold collar personnel with business knowledge critical for competitive edge

CPSM



- ◉ Program is concentrating on strategic purchase and aims for SCM to adapt to the competitive global business field



aSSIST CEO Program

The aSSIST CEO Program offers a creative education that values knowledge and heart to strive through the age of limitless competition and lead the new era of the business world. aSSIST is building the nation's best CEO educational community where students learn the leadership that will change their companies from a 'good company' to a 'great company,' and acquire 'real live knowledge' and accomplish sustainability management.' Also, the school is establishing the infrastructure to strengthen the ties between industry and academia by sharing up-to-date business cases and offering internship opportunities to MBA and doctoral program students.

"Management with reason and passion"

▣ 4T CEO Sustainability Management Course

- ◎ aims to upgrade the CEO's vision and leadership on social responsibility management, environmental management, innovative management, and creative management based on aSSIST's distinctive ethical 'Sustainability Management-4T.'

Ethics and social responsibility management / Environmental management / Innovative management / Creative management

[aSSIST CEO Forum] – Operates education networking for top domestic CEOs

The "4T CEO Continuous Management Program" is a high-class education program that was only open from the 1st term (2005) to the 10th term (2010). It was renamed as the "aSSIST CEO FORUM" in June 2010, combining the 1st to 10th terms, and has made a new start since then. The "aSSIST CEO FORUM" has established a 'sustainable CEO community' that is comprised of a network of the best CEOs in the country, including Yoon Suk Kum, president of Woongjin Corporation, Park Yong Hyun, president of Doosan Corporation, Lee Hee Bum, president of STX Energy, Hyun Jung Eun, president of Hyundai Group, and Lee Man Deuk, president of Samchully Co. Ltd. Not only is this CEO community a solid base for an educational network, but through this, the best businessmen are also able to take part in various education, cultural, art, and social welfare activities.

▣ 4T CEO Green Growth Course

- ◎ A course under the theme of 'Green Growth Management,' that will feature in-depth discussions and up-to-date information on the new driving force in a low carbon economic environment, to prepare for the future market and devise a strategic business plan.

Green technology industry / High-tech convergence industry / High-value added service industry

▣ 4T Next Generation Business Leader Course

- ◎ concentrates on the business mind based on 4T, future forecast skills, human network, and overseas business opportunities to develop new projects that future business leaders must adopt.

Business ethics / New technology / Leadership / Creative management / Overseas business / Media



Recommendations

Under the educational principle of 'Sustainability Management - 4T,' aSSIST has operated tailored educational programs specialized for various industries. By collaborating with leading business schools around the world, aSSIST offers global business education. As a result business leaders are cultivated through its curriculum which is focused on live practice.



▣ **Yuhan-Kimberly, Department Chief of Marketing,**
Ryu, Jae Wook (aSSIST MBA 07)

A distinctive characteristic of aSSIST is that it does not just drill fragmentary knowledge. It runs a program combining business knowledge and humanities under the 4T ethics that could change the world. I believe that aSSIST will continue to develop as the nation's best practical business educational institute that emphasizes sustainability management and ethics.



▣ **Korea Electric Power Corporation, UAE Nuclear Agency,**
Eom, Yoon Jung (aSSIST MBA 09)

I was able to continue in-depth studies with the Social Responsibility Scholarship. The curricula required courses and elective courses that aim to cultivate business leaders are the merits of aSSIST. I thank my peers who have worked hard, professors who helped me through difficult times, and the alumni who have supported me. As I take my first step in the real world, I will do my best to lend a helping hand.



▣ **GE Energy, Executive Director, Asia Pacific Sourcing,**
Lee, Young Ki (aSSIST Ph.D.)

In a rapidly changing business environment that is difficult to predict, I would recommend aSSIST's programs that share essential knowledge needed to analyze and establish business strategies, and boost competency and value in the knowledge industry. You not only acquire knowledge to become a global business leader, but also gain social value.



▣ **Former Hyundai Oilbank, CEO,**
Seo, Young Tae (aSSIST Ph.D. / Visiting Professor)

It was an honor to have the opportunity to learn the scientific approach and analyze skills in business, a field that I have experienced for so long. Now I have developed observation skills towards the real business world. This has improved my expertise, and also boosted my confidence in the decision-making process.



▣ **Woongjin Corporation, CEO,**
Yoon, Seok Geum (aSSIST CEO Program)

I believe that a CEO should 'know what he/she is seeing'. A CEO should know an outstanding individual when he/she sees one. And also be able to look into the future and get to the source of a problem. This will result in an endless learning experience. The CEO courses that aSSIST offers will be the key to understanding the changes of our times and solving problems.



▣ **Former National Police Agency, Superintendent,**
Park, Sang Yung (aSSIST Short-Term Course)

aSSIST aims at nurturing professional business leaders in each field through specialized curricula. The short-term courses in particular, are the most ideal programs because participants can continue their professional careers and learn essential knowledge at the same time. I have faith that aSSIST will contribute to the development of industrial security with its systematic and professional curricula.



▣ **Shinhan Bank, Talent Development Vice Director,**
Ahn, Byung Ryong (aSSIST Customized Program)

It is hard to find the right program that satisfies the company. aSSIST has accumulated the infrastructure and know-how in the last 15 years with its company customized programs and appropriate curriculum, course duration, and operation systems that meets each company's needs. The faculty members are outstanding in each field, which enables the best and efficient educational program that a company official could hope for.

Contact us

- ▣ For specific information regarding admissions, please use the email and phone contacts below

MBA / Ph.D. Program

Global Leadership MBA	☎	82-70-7012-2778	/	sybae@assist.ac.kr
Financial Engineering MBA	☎	82-70-7012-2779	/	jhkim3@assist.ac.kr
Industrial Security MBA	☎	82-70-7012-2764	/	ymchoi@assist.ac.kr
Graduate School of Leisure Business MBA	☎	82-70-7012-2751	/	hbjeong@assist.ac.kr
		82-70-7012-2216	/	sjlee@assist.ac.kr
China & Korea MBA	☎	82-70-7012-2216	/	sjlee@assist.ac.kr
i-MBA	☎	82-2-360-0733	/	hajang@assist.ac.kr
Ph.D. Program(DMA)	☎	82-70-7012-2217	/	hylim@assist.ac.kr
		82-70-7012-2218	/	ehlee@assist.ac.kr

aSSIST CEO Program

4T CEO Green Growth Course	☎	82-70-7012-2221	/	bkkim@assist.ac.kr
4T Next Generation Business Leader Course	☎	82-70-7012-2784	/	skkim@assist.ac.kr

aSSIST Short-Term Course

Industrial Security Professional(ISP)	☎	82-70-7012-2222	/	jnchoi@assist.ac.kr
Certified Professional in Supply Management(CPSM)	☎	82-70-7012-2227	/	hgwag@assist.ac.kr

aSSIST Customized Program

In-house MBA Program	☎	82-70-7012-2781	/	siyoon@assist.ac.kr
		82-2-360-0735	/	cylee@assist.ac.kr

The First Mover, aSSIST